

# Split Level

30'-6" x 33'-6"

Living: 1296 sq. ft.

Finished Basement: 906 sq. ft.

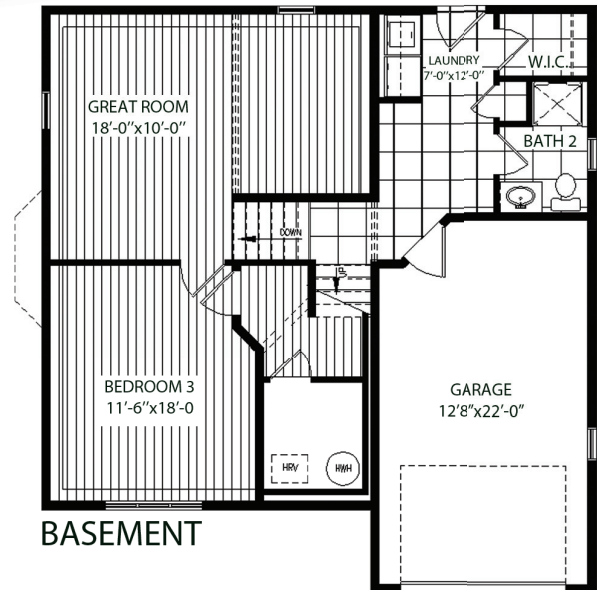
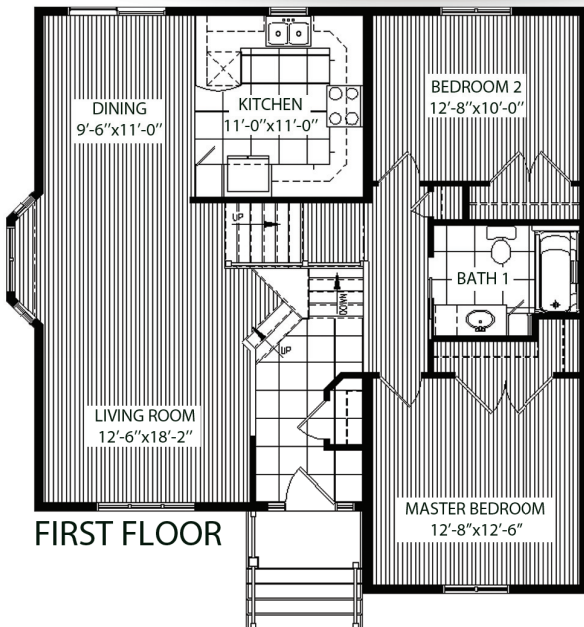
Garage: 305 sq. ft.

3 Bedrooms

1 3/4 Bath



## Single Family Housing



www.perfectionhomes.com

**(506)383-4009**

Revision: 07/02/2013

Please note some products may not be exactly as shown.